

A Totally 80's Animated TV Series

HIGH SCHOOL HIGH

angiec@abbynormalprods.com

PITCH DECK



LOG LINE

BE
COOL!



BAG YOUR
FACE

z
z

RAPPERS
DELIGHT



Refusing to accept their fate at the unpopular table, two awkward besties armed with leg warmers, mix tapes and a conniving Black Barbi are rewriting the odds to gain celebrity high school status, one disastrous scheme at a time.

SYNOPSIS

Like, ohmigod...Thin ties and leg warmers are so in; your gym teacher just made parole and your after-school hangout totally plays Run DMC ...like all day.

It's the 80's—Regan is President, making a mix-tape is a rite of passage and MTV actually plays music videos! Welcome to the world of "High School High," a bizarre school that is close to the ghetto, but far from the hood—where an odd assortment of students are trying to hang with the right cliques, fit in and be more black, less black or just the right amount of black.

Sammie and Alex are best friends; two inseparable and co-dependent nerds starting their freshman year at High School High. Shunned by the thin and attractive, these two are on a desperate mission to figure out deodorant, and try to obtain their life-long ambition of being popular. After a little stalking they find their targets in the form of affluent brat Fiona, ditz wanna-be Valley-girl Nikki, her divorced boyfriend Sid, and Shanaynay - who often OD's on school spirit.

With a chronic inability to be cool, Sammie and Alex cannot hide who they really are...an awkward concoction of weird, goofy with trashy spandex. Sammie is a brainy geek with boy-breasts whose getting sketchy advice from the Black Barbi she keeps in her locker and Alex is gutsy, chunky and loud with razor sharp braces.

With a raunchy, urban twist, "High School High" is an animated comedy spoof that chronicles the popular versus the unpopular; horny teenagers against career virgins and straight hair against the jerry curls. And in the midst of all this psycho teen drama is an appealing underdog story of two quirky black girls prowling the hallways for popularity.

CHARACTERS



ALEX

Status: Loser
Purpose in life: Being popular
With her flamboyant weirdness and exhausting banter, Alex is brash and bawdy and has no problems sacrificing herself to the enemy to get noticed.



NIKKI

Status: Villainous Bitch
Purpose in life: To be an unhappy Trophy Wife
Snarky and casually cruel, Nikki is a total airhead clinging to her one functioning brain cell. She enjoys inflicting peer pressure, lying and tribal backstabbing.



SAMMIE

Status: Geek
Purpose in life: Whatever Alex wants
Sweet and unstable, she struggles to hide her fuzzy feelings for Nikki's boyfriend. Sammie is a small town misfit with clumsy body language.

SHANNAYNAY

Status: Scary Jock

Purpose in life: Sudden Death Dodgeball

A Jersey transplant with payback always in her agenda. Shannaynay is a prickly and overzealous athlete with an impenetrable hardness and loud confidence.



FIONA

Status: Queen Bee

Purpose in life: World Domination

Fiona is a sophisticated soul destroyer. Convinced she has the best bangs in the universe, she is disturbingly peppy with take-charge authority.



MACE

Status: Moron

Purpose in life: Own a Light Saber

Wild and unruly, Mace is a reliable source of inappropriate. He makes every obscenity pop and frequently chafe's under pressure.



Status: Dork

Purpose in life: Freelance Drug Dealer

The only white kid in the entire school, White Craig is ruled by getting high and anarchy. He is chaotic, crude and emotionally fragile.

WHITE CRAIG



SUPPORTING CHARACTERS

GLORIA
POWER HUNGRY HALL MONITOR



T.T
FIONA'S PERSONAL ASSISTANT



JC
HOLY ROLLERS PRESIDENT



MELVIN
UNSTABLE GENIUS

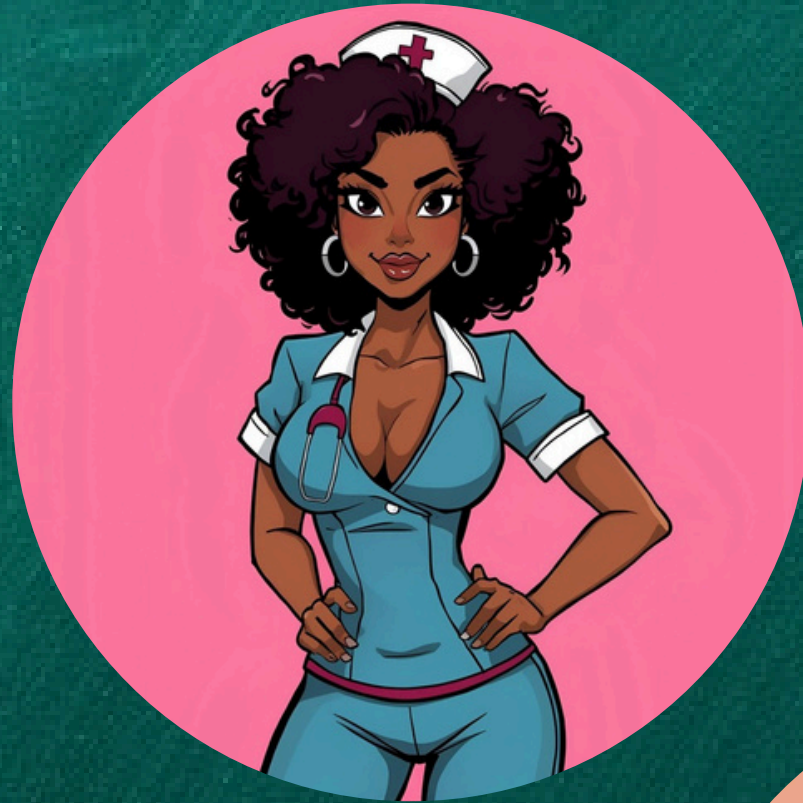


GILBERT
PROFESSIONAL SNITCH



THE FACULTY

**NURSE LOLA PRINGLES
MAKES HER OWN MED'S**



**PRINCIPAL DINGLEMAN
KELOPTOMANIAC**



**ROBBIE D. – COUNSELOR
RECENTLY PAROLED**



**MISS LOOMIS
HAS MULTIPLE
PERSONALITIES**



**COACH SMILEY
SCARY & MILITANT**



COMPARABLES

$$\lim_{x \rightarrow 0} \left(\frac{1}{x} - \frac{1}{e^x - 1} \right) = \lim_{x \rightarrow 0} \frac{e^x - 1 - x}{x(e^x - 1)} = \frac{1}{2} \quad \lim_{x \rightarrow 0} \left(\frac{1}{x} - \frac{1}{e^x - 1} \right) = \lim_{x \rightarrow 0} \dots$$

$$y' = (\ln u)' (\sin x)' = \frac{1}{u} \cos x = \frac{\cos x}{\sin x} = \operatorname{ctg} x$$

$$x = \lim_{\lambda \rightarrow 0} \int_a^{\lambda} f(x) dx + \lim_{\mu \rightarrow 0} \int_{\lambda + \mu}^b f(x) dx \quad \int_a^b f(x) dx = \lim_{\lambda \rightarrow 0} \int_a^{\lambda} f(x) dx + \lim_{\mu \rightarrow 0} \int_{\lambda + \mu}^b f(x) dx$$

$$\lim_{x \rightarrow 0} \frac{4x}{\operatorname{tg}(\pi(2+x))} = \left\{ \frac{0}{0} \right\} = \lim_{x \rightarrow 0} \frac{4x}{\operatorname{tg} 2\pi x} = \frac{2}{\pi} \quad \lim_{x \rightarrow 0} \frac{4x}{\operatorname{tg}(\pi(2+x))} = \left\{ \frac{0}{0} \right\} = \lim_{x \rightarrow 0} \dots$$

$$(2u+v)x + (-u+v)y + (5u+2v)z - 3u+v = 0 \quad (2u+v)x + (-u+v)y + (5u+2v)z - 3u+v = 0$$

$$= x_1 + mt, y = y_1 + nt, z_1 = z + pt \quad x = x_1 + mt, y = y_1 + nt, z_1 = z + pt$$

$$= mz + a, y = nz + b \quad \frac{x-a}{m} = \frac{y-b}{n} = \frac{z}{1} \quad x = mz + a, y = nz + b$$

$$(x+c)^2 + y^2 = 4a - 4a\sqrt{(x-c)^2 + y^2} + (x-c)^2 + y^2 \quad (x+c)^2 + y^2 = 4a - 4a\sqrt{(x-c)^2 + y^2} + (x-c)^2 + y^2$$

$$\lim_{x \rightarrow 0} \left(\frac{1}{x} - \frac{1}{e^x - 1} \right) = \lim_{x \rightarrow 0} \frac{e^x - 1 - x}{x(e^x - 1)} = \frac{1}{2} \quad \lim_{x \rightarrow 0} \left(\frac{1}{x} - \frac{1}{e^x - 1} \right) = \lim_{x \rightarrow 0} \dots$$

$$y' = (\ln u)' (\sin x)' = \frac{1}{u} \cos x = \frac{\cos x}{\sin x} = \operatorname{ctg} x \quad y' = (\ln u)' (\sin x)' = \frac{1}{u} \cos x$$





$$ax^2 + bx + c$$

$$\begin{aligned} \frac{dy}{dx} &= \frac{d}{df(x)} g(f(x)) \cdot \frac{d}{dx} f(x) \\ &= \frac{d}{du} g(u) \cdot \frac{d}{dx} (u) \end{aligned}$$

EPISODE LIST

$$F = ma$$

$$F = \frac{\Delta p}{\Delta t}$$

$$p = mv$$

$$E_k = \frac{1}{2} mv^2$$

$$W = F_s$$

$$p = F_v$$

$$L = I\omega$$

$$E_k = \frac{1}{2} I\omega^2$$

$$W = \tau\theta$$

$$p = \tau\omega$$



$$R = \sqrt{A^2 + B^2 + 2AB\cos\theta}$$

$$\tan \alpha = \frac{B \sin \theta}{A + B \cos \theta}$$

1 "JESSIE'S GIRL"

While Sammie and Alex try to uncover the secret to a former nerd's new found popularity, Sid is bothered by a sex dream. And Gloria has a quota to meet if she wants to make head Hall Monitor.

2 "WHITE HORSE"

Sammie and Alex see an opportunity to girl-bond when all female students are banned to the cafeteria with life threatening menstrual cramps. Mace and White Craig Kidnap Nancy Regan to stop her from delivering her "Just Say No" speech to the school.

3 "I'M COMING OUT"

Gloria can't tell if she is in labor or having a reaction to a chili dog she ate. Alex and Black Barbi try to convince Sammie to run for class president. And White Craig and Sid discover they have similar skeletons in their closet.

4 "I'M COMIN OUT"

Alex and Sammie make a deal to help Shanaynay cheat on a exam in exchange for dodgeball tips. Mace and White Craig cannot control the growth of their weed plant. And The faculty fights over play time with the new Pac Man machine.

5 "WHAT HAVE I DONE TO DESERVE THIS?"

While the teachers go on strike for a new VHS machine, Fiona and Nikki set out to destroy the new dating service Sammie and Alex created for the unpopular. Mace and White Craig seek out the thief of their weed.

6 "HARDEN MY HEART"

As Principal Dingleman tries to figure out which student poisoned and killed the culinary teacher, Alex's soon to be dissected frog begins to beg for its life, And T.T dumps Fiona for Shanaynay.

Irreverent and Cynical

CRUDE

PARODY
PASTICHE

SATRICAL
POLARIZING

Defy
Logic

SOCIAL
COMMENTARY

MEAN
SPIRITED

DARK
HUMOR

shock
value

tone and style

ABSURD

bold



Thank you!