

# THE COMPANY SHE KEEPS

LOOKBOOK





# LOGLINE



A prominent, yet ruthless high school guidance counselor, who uses her favorite students as drug runners, suddenly finds herself under a dark cloud of suspicion when one of the students is found murdered.





A close-up, profile view of a woman's face, looking towards the left. Her mouth is slightly open, and wisps of white smoke or vapor are rising from it, swirling upwards and to the right. The lighting is dramatic, with strong highlights on her cheekbones and nose, and deep shadows on the right side of her face. She is wearing a dark, possibly black, jacket or top. The background is dark and indistinct.

# CHARACTERS

UNFORGETTABLE  
Rhythmical  
REVEALING



ROSE CATHERINE CLAYTON



Spiteful  
Toxic  
Opportunistic

DONNIE CLAYTON



Intense  
Defiant  
Calculating

EDDIE PEREZ



Artistic  
Audacious  
Compassionate

SADIE PEREZ



Resourceful  
Authentic  
Timesless

MISSY



Delicate  
Intellectual  
Trendy





**ANGIE  
COMER**  
WRITER | DIRECTOR

Tailor-made for directing, Angie is a remarkably versatile storytelling with the filmmaking skills to hook, fire-up and inspire any audience. With 7 short films and 8 feature screenplays to her credit, Angie will always strive to make an impact and build a legacy.



**MICHELLE  
CLAY**  
PRODUCER | EDITOR

With the uncanny ability to make every shot count, Michelle will go above and beyond to make magic happen. She has a flair for pacing and timing and will sacrifice sleep to hit any hard deadline.



**DONALD  
HAYES**  
COMPOSER

Donald has carved out a successful music career that expands more than twenty years. With the essence to design a score for any genre, he puts in extra effort to understand a scene.

**PRODUCTION TEAM**  
(SO FAR)

LET'S MEET OUR TEAM MEMBERS  
WHO ARE PROFESSIONALS,  
RICH IN EXPERIENCES WITH TECHNICAL  
PRECISION AND ARTISTIC PROWESS.



# COMPARABLES

Playful Vindictive UNHINGED





MEETS



Meets



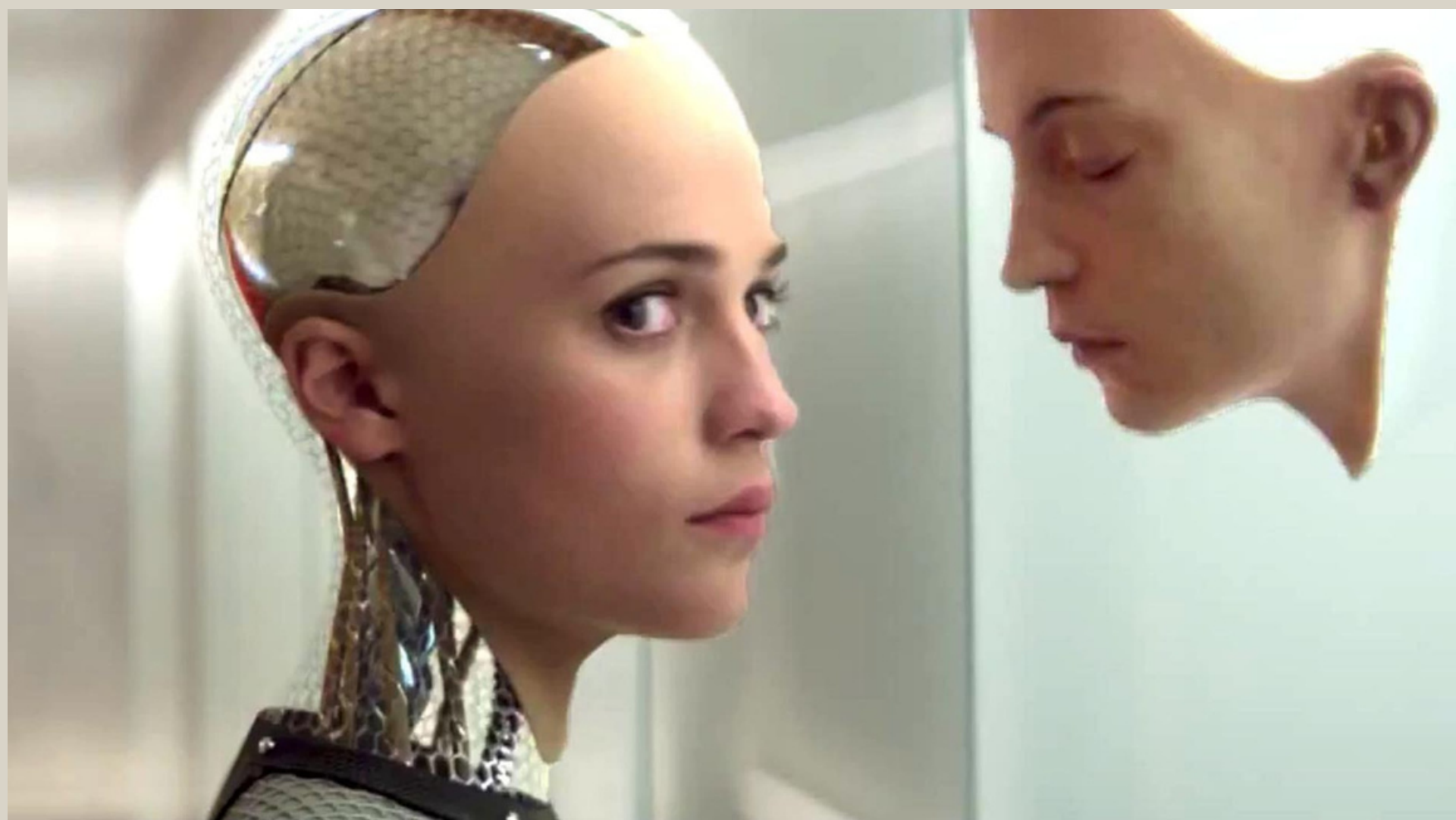
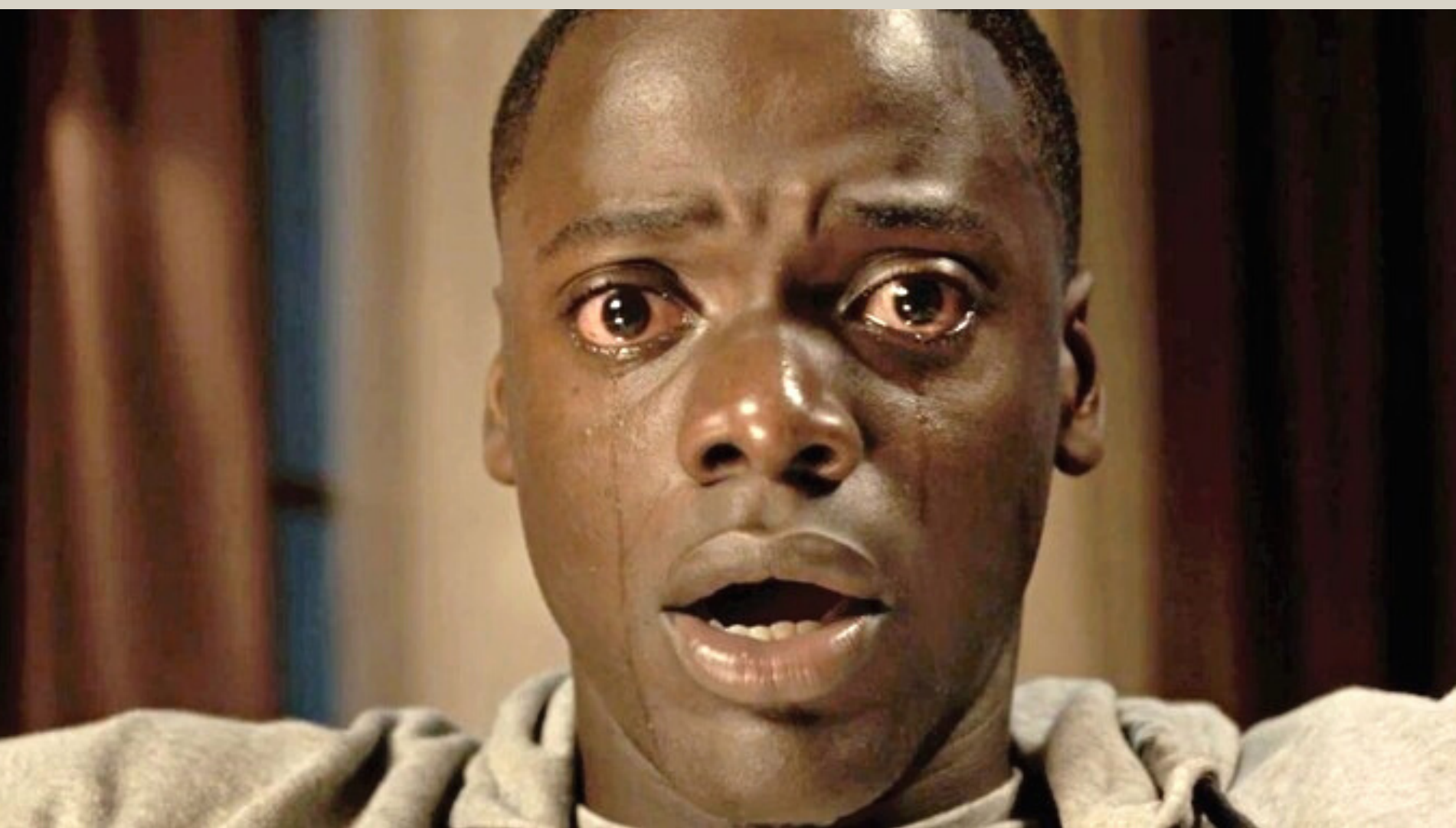




# MOOD & TONE

Life-shattering **SALACIOUS** Blunt







# FRAMING

BOLD FOR MAXIMUM IMPACT









# LOCATIONS

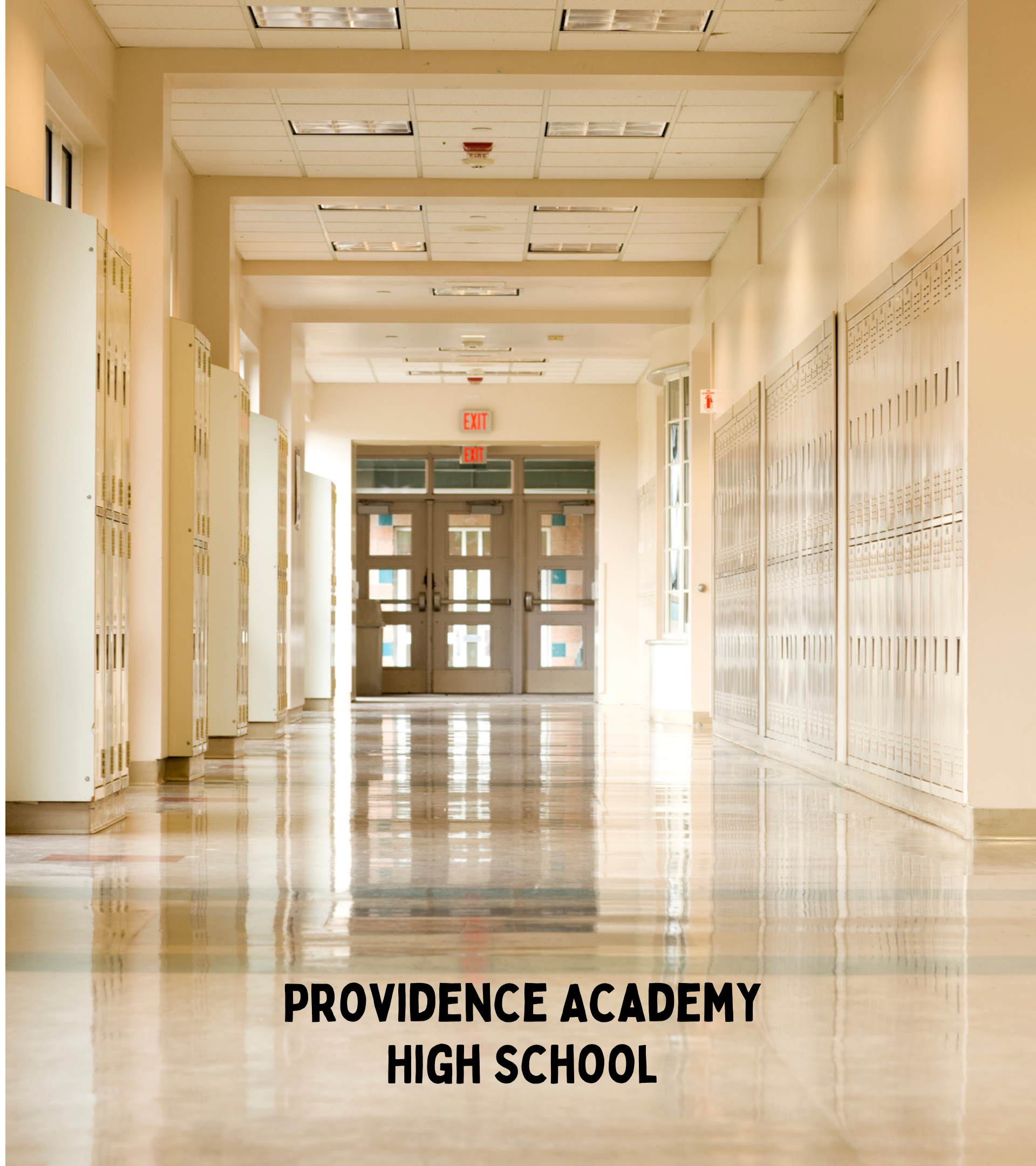
Detailed PARADOXICAL  
ORGANIC





A modern teacher's conference room featuring a large, dark wood conference table surrounded by black mesh chairs. A whiteboard is mounted on the wall, and a potted plant sits on the table. Large windows provide natural light.

## TEACHER'S CONFERENCE ROOM





THE BASEMENT

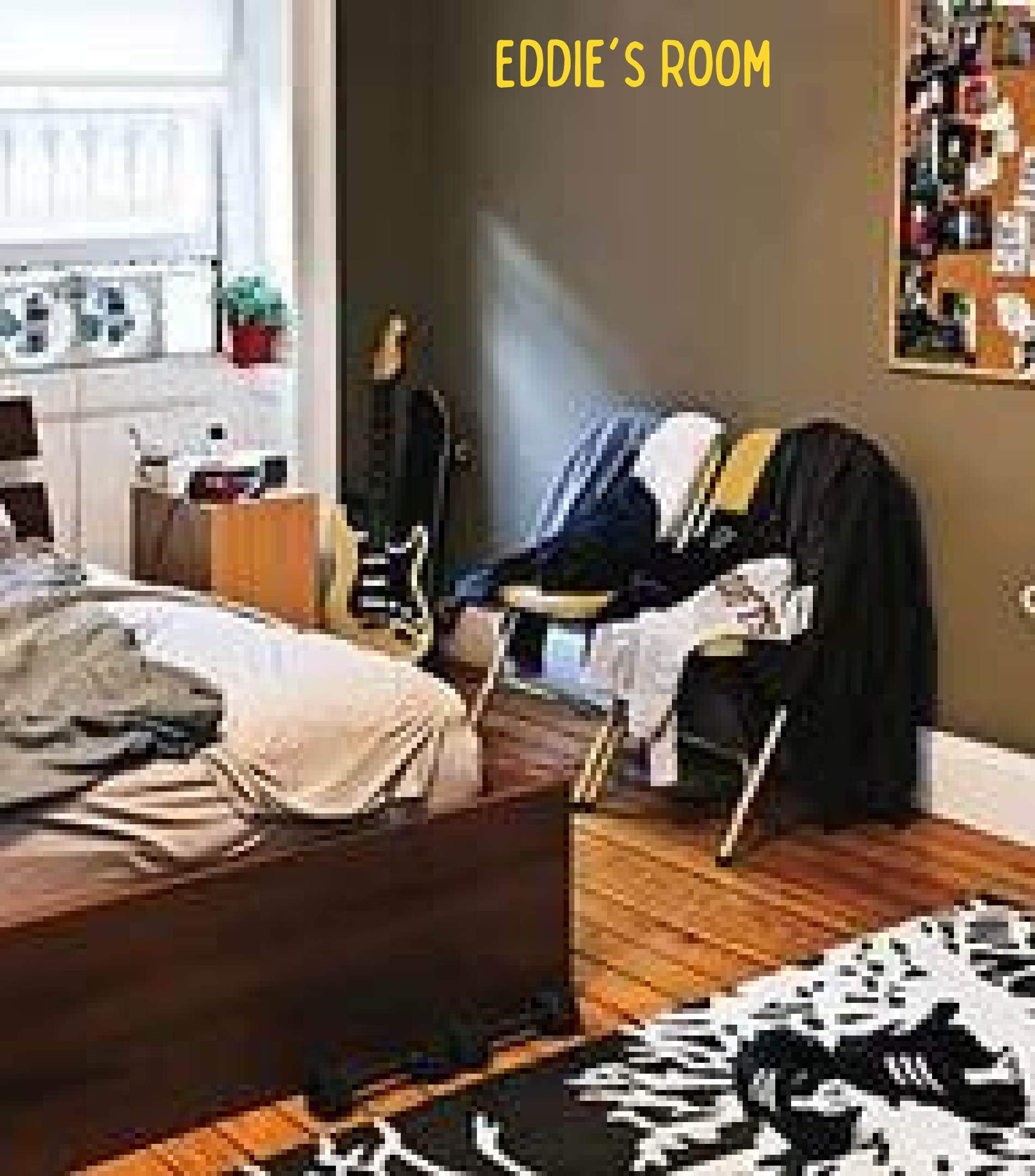


ROSE CATHERINE'S HOUSE





EDDIE'S ROOM



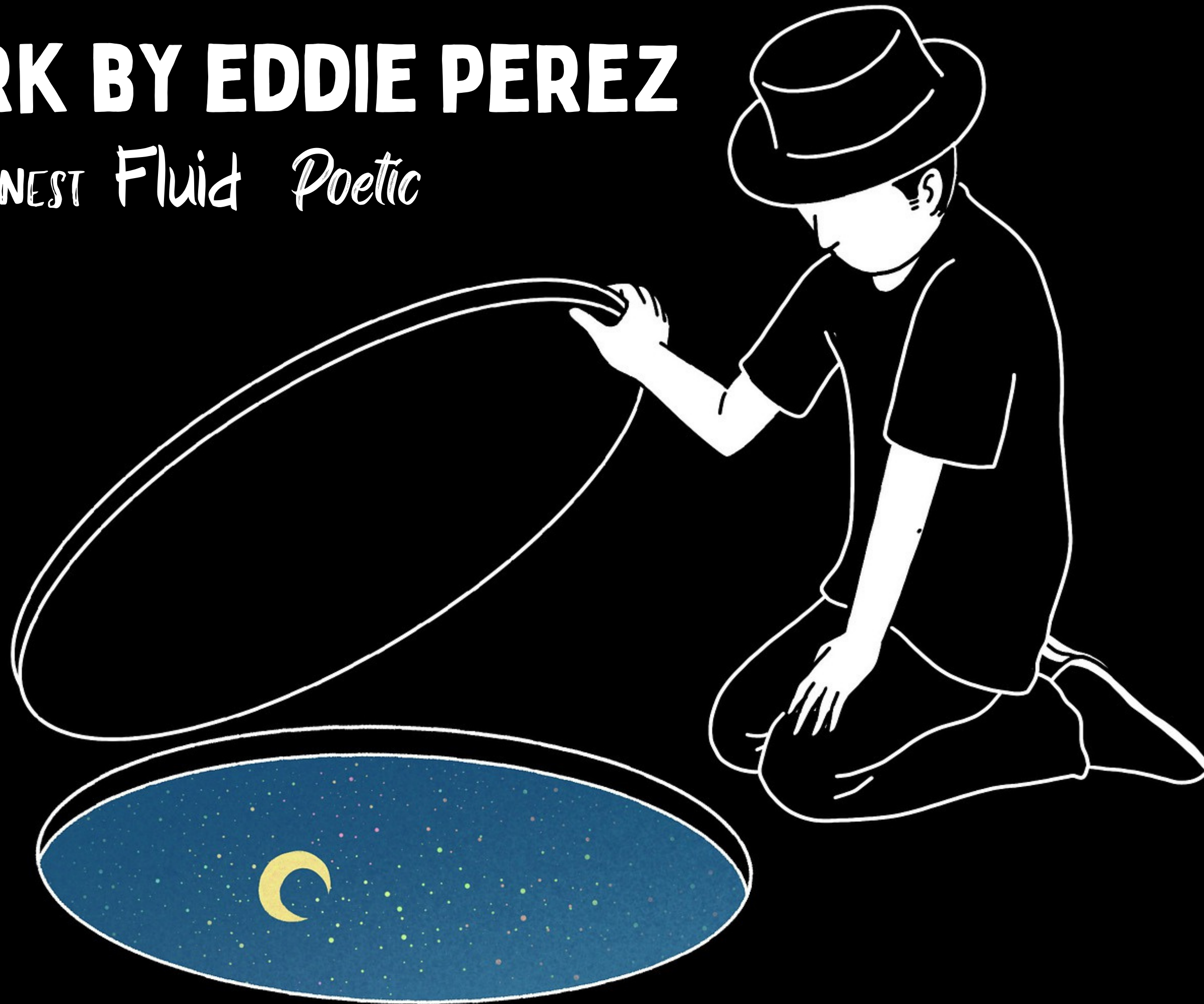
PEREZ HOUSE



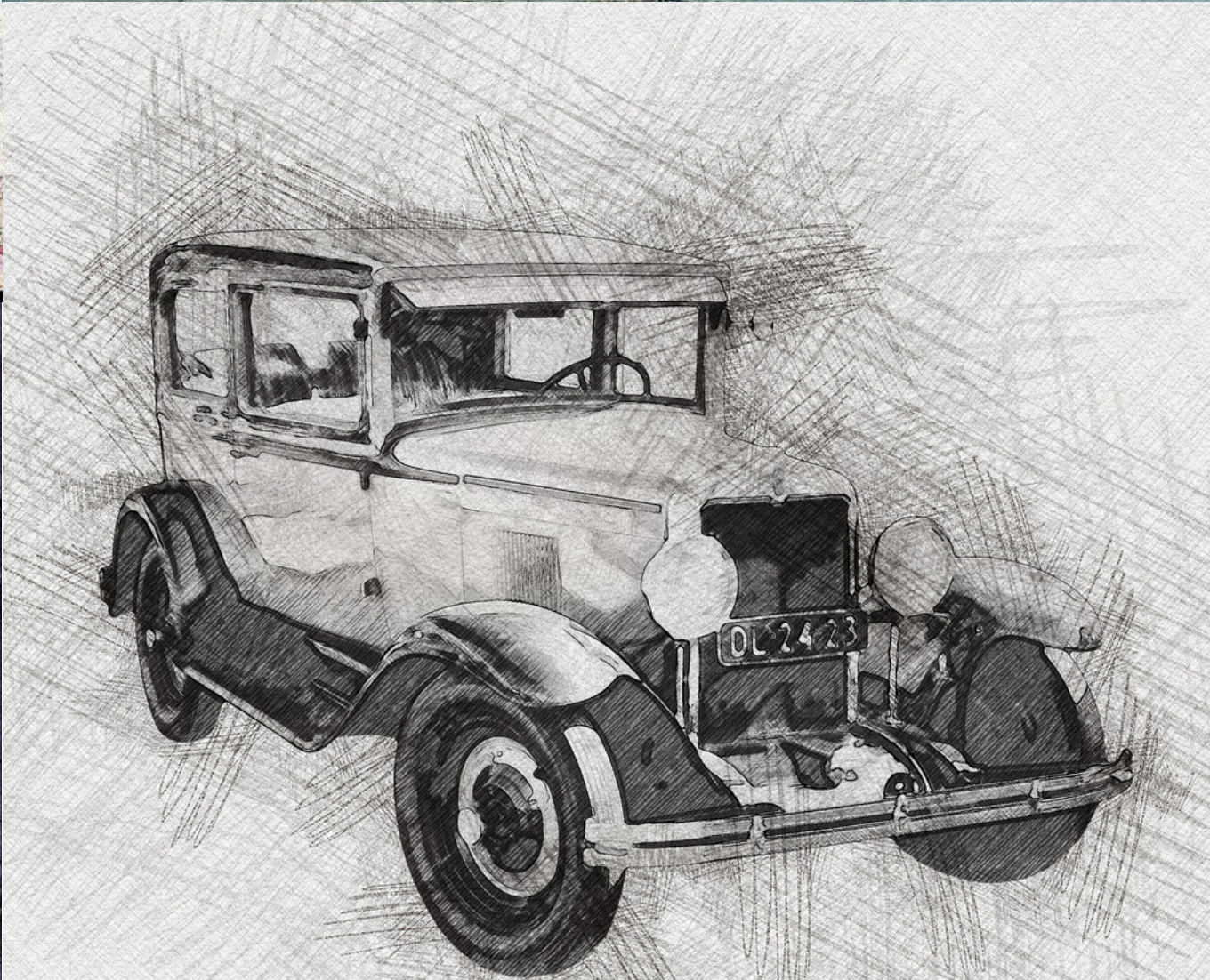


# ARTWORK BY EDDIE PEREZ

HONEST Fluid Poetic









# COLOR PALETTE

Vibrant  
Guarded  
Powerful









# Director's Statement

Why I want to make **"The Company She Keeps"**

delightfully mean-spirited characters

gateway for discussion

piercing sadness

visceral thrills

UNPREDICTABLY FUNNY

compromised morals

cold-blooded

building uncertainty

rips open secrets

brings a fierce level of tension

*epic manipulations*

effectively eerie





A black and white photograph of a person standing in a field of tall, dry grass. The person is wearing a dark coat and a hat, and is holding a dark umbrella over their head. They are also carrying a bag. The background is a hazy, distant landscape under a grey sky.

# Thank You!

Angie Comer  
[www.angiecomer.rocks](http://www.angiecomer.rocks)